

Dual Y Valves

Application

- Ideal for compressor applications

Feature

- Dual action valve

Specifications

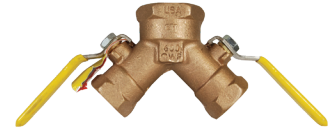
- Non-vented pressure rating: **600 PSI CWP**
- Vented pressure rating: **125 PSI CWP**

Vented

Female NPT Inlet (1)	Female NPT Outlets (2)	Bronze Part #
1"	3/4"	BBV100DWV
1-1/4"		BBV125DWV

Non-Vented

Female NPT Inlet (1)	Female NPT Outlets (2)	Bronze Part #
1"	3/4"	BBV100DW
1-1/4"		BBV125DW



Mini Ball Valves

Feature

- Blow-out proof stem

Material

- PTFE seats and FKM stem seal

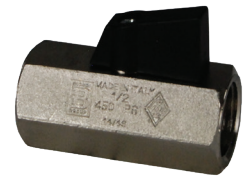
Specifications

- Maximum temperature **330°F (166°C)**
- Pressure rating: **450 PSI**

Approval

- Canadian Standard Association approved

Female NPT	Port	Nickel Plated Brass Part #
1/8"	standard	MBV12
1/4"		MBV25
3/8"		MBV38
1/2"		MBV50



Mini Brass Ball Valves

Application

- Water, oil or gas in commercial, and light industrial applications

Features

- Blow-out proof stem
- Large raised wrench flat
- Reversible handle
- Full port
- Ideal use for as a gas or gauge cock
- Threads: NPT

Materials

- Forged brass
- Seal: standard FKM
- Seat: TFE

Specifications

- PSI ratings: **600 PSI at 100°F (37°C)**
- Temperature rating: **-40°F to 300°F (-40°C to 148°C)**
- End configurations: female x female and male x female

Approvals

- ANSI Z21.15-2009/CSA 9.1-2009 (**1/2 PSI**)-manually operated gas valves for appliances
- ASME B1644-2002- manually operated metallic gas valves for use in above ground piping systems (**2 and 5 PSIG**)
- MSS SP-100 compliant
- CSA **1/2 PSI** and **5 PSI** gas listings

Size	Part #
1/4"	MBBV25
1/8"	MBBV12
1/4"	MBBMV25
1/8"	MBBMV12



MBBMV25



MBBV25

